

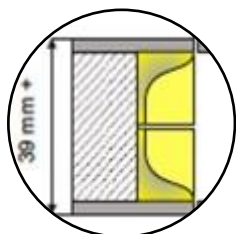
Noha[®]
the invisible handle



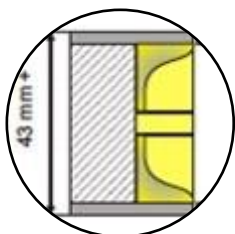
for **SLIDING** doors – NS series

The NS series are door handles that recede into the door panel and can be used on all sliding doors that slide into the wall or in front of it. The handle is operable on both sides with plenty of space for the fingers. The handle has the same look as the No-Ha for swing doors.

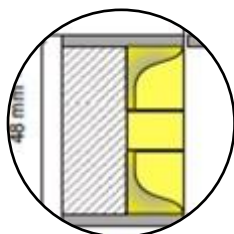
NS 200



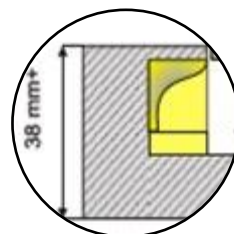
NS 205

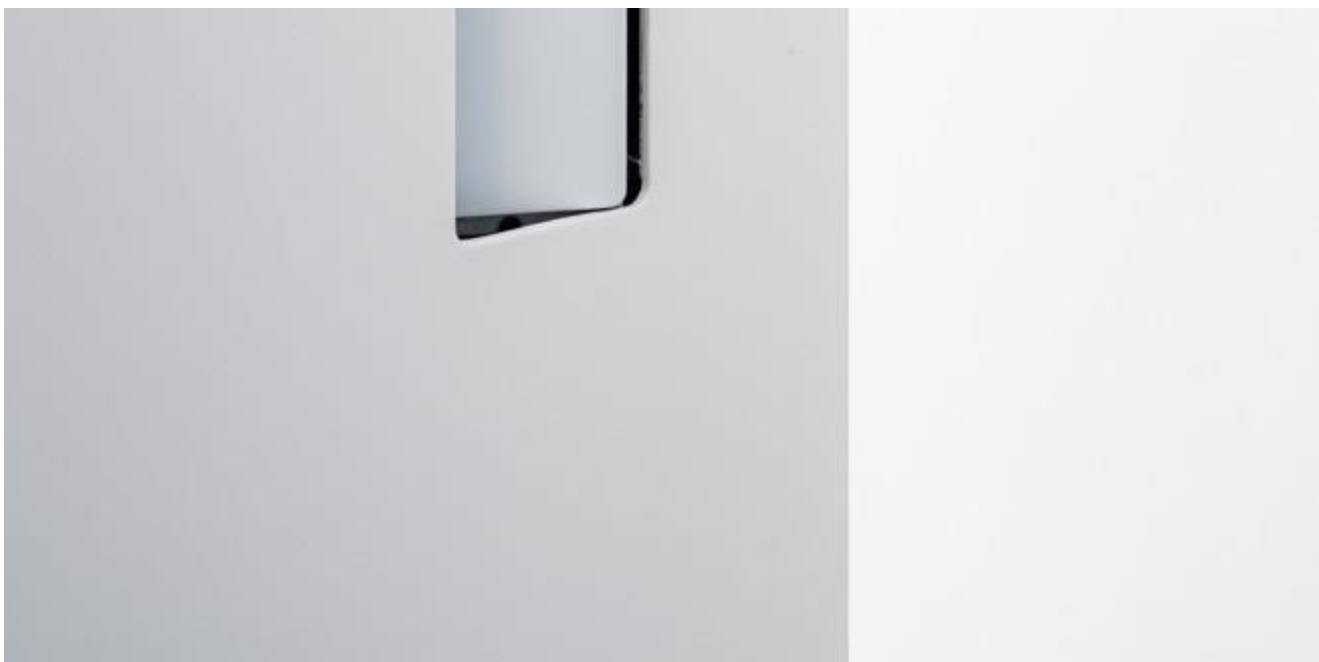


NS 210



NS 105





for **SLIDING** doors – NS series

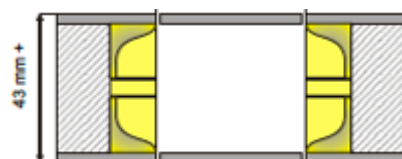
This is the handle you need for all sliding doors and pivoting doors. You can apply it 1 sided or both sided. The product type depends on the thickness of the doorleaf.



NS 200

2-sided handle

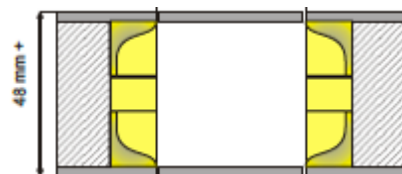
Thickness 38mm – 43 mm



NS 205

2-sided handle

Thickness 43mm – 48 mm

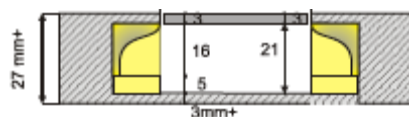


NS 210

2-sided handle

Thickness 48mm – 52 mm

for doors with thickness more than 52 mm, you can use 2 x NS 105 on both sides.



NS 105

1-sided handle

Thickness 27mm – unlimited